



International Cricket Ground - Feasibility Study

Presented to
City of Cupertino
Recreation &
Community Services
December 20, 2017

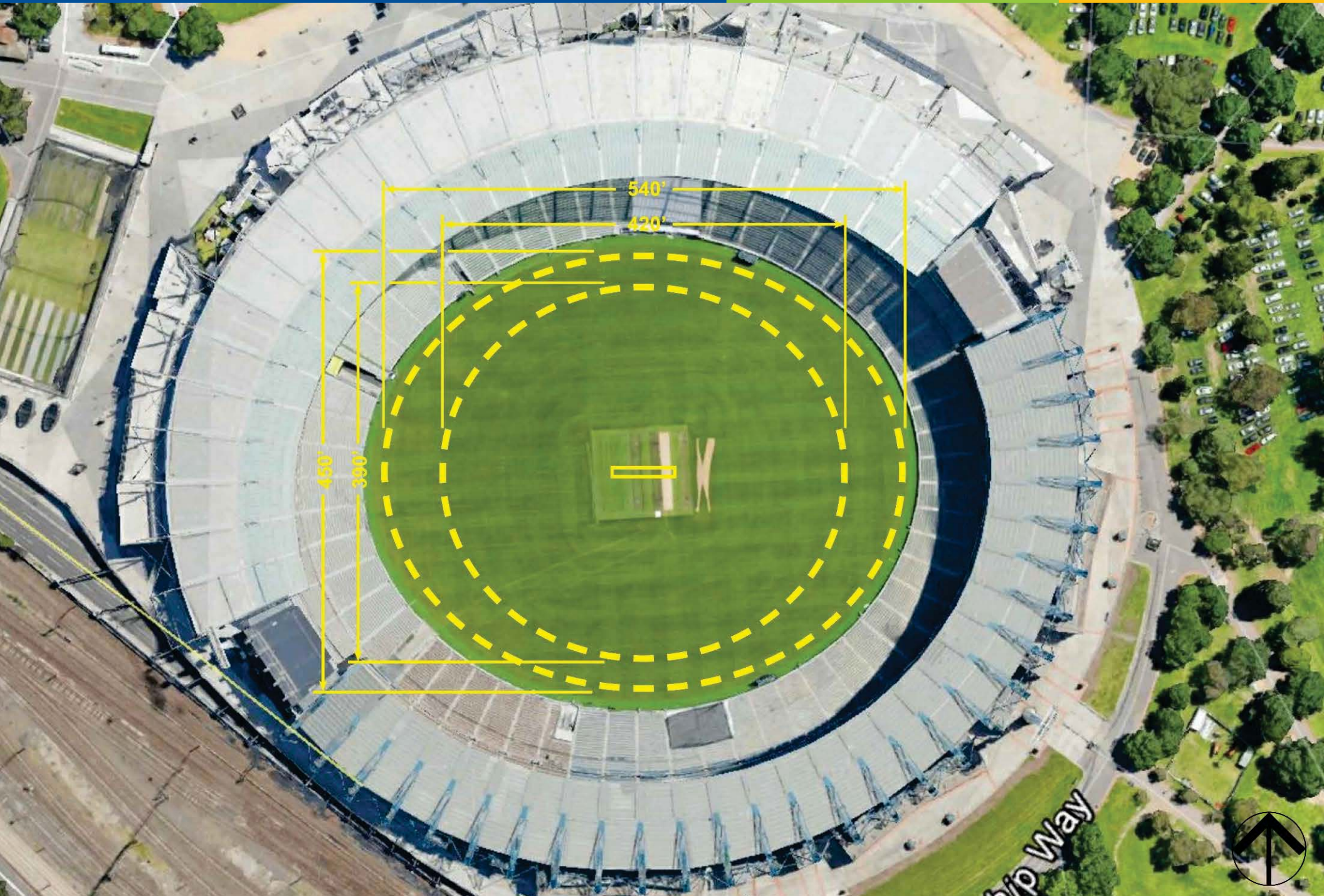


Project Purpose

- Identify required playing area, supporting facilities, spectator seating and accessibility to support International Cricket facility
- Identify from City's inventory of parks and schools the most suitable site(s), if any
- Identify existing uses that would be displaced

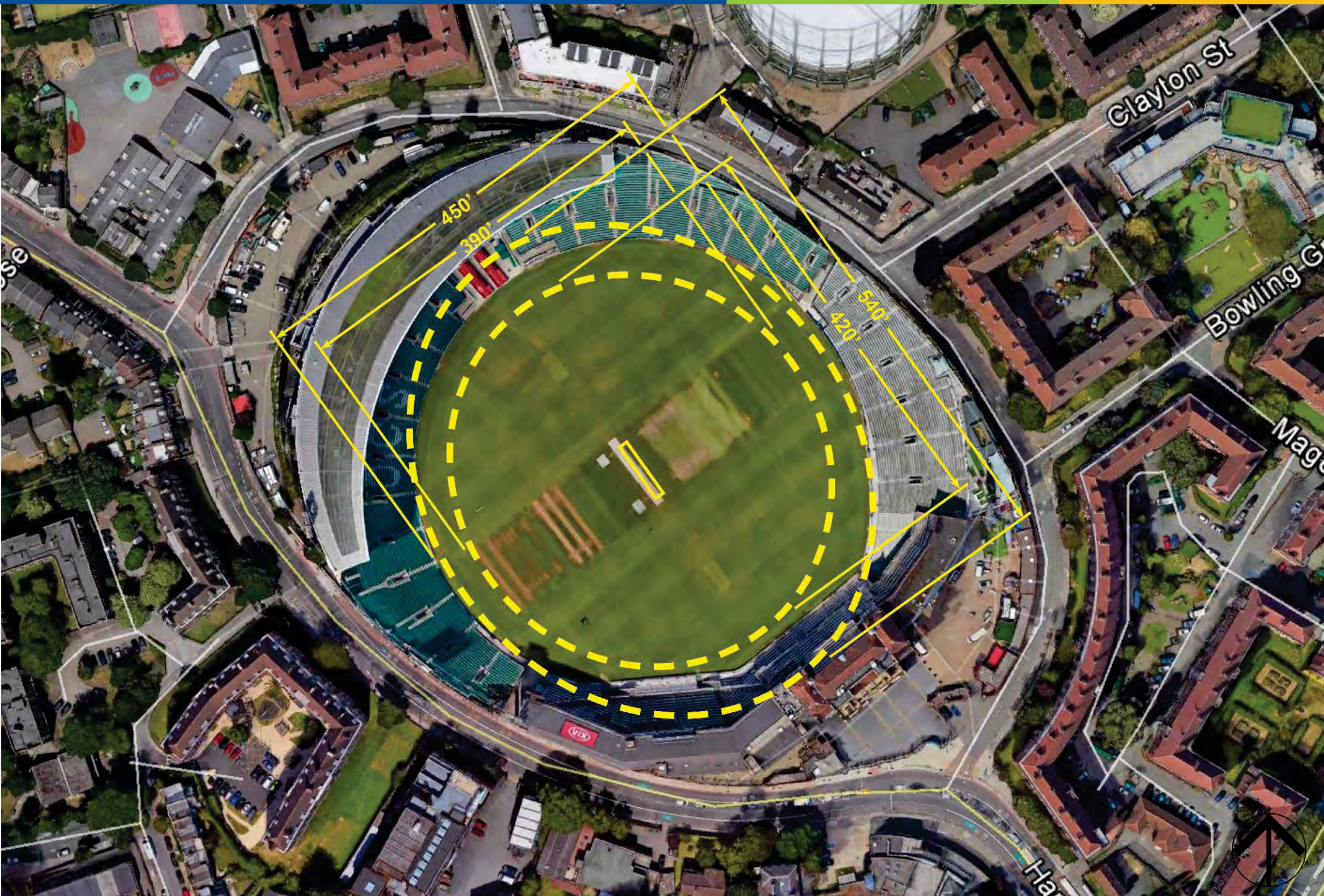
Melbourne Cricket Ground

Melbourne, Victoria, Australia



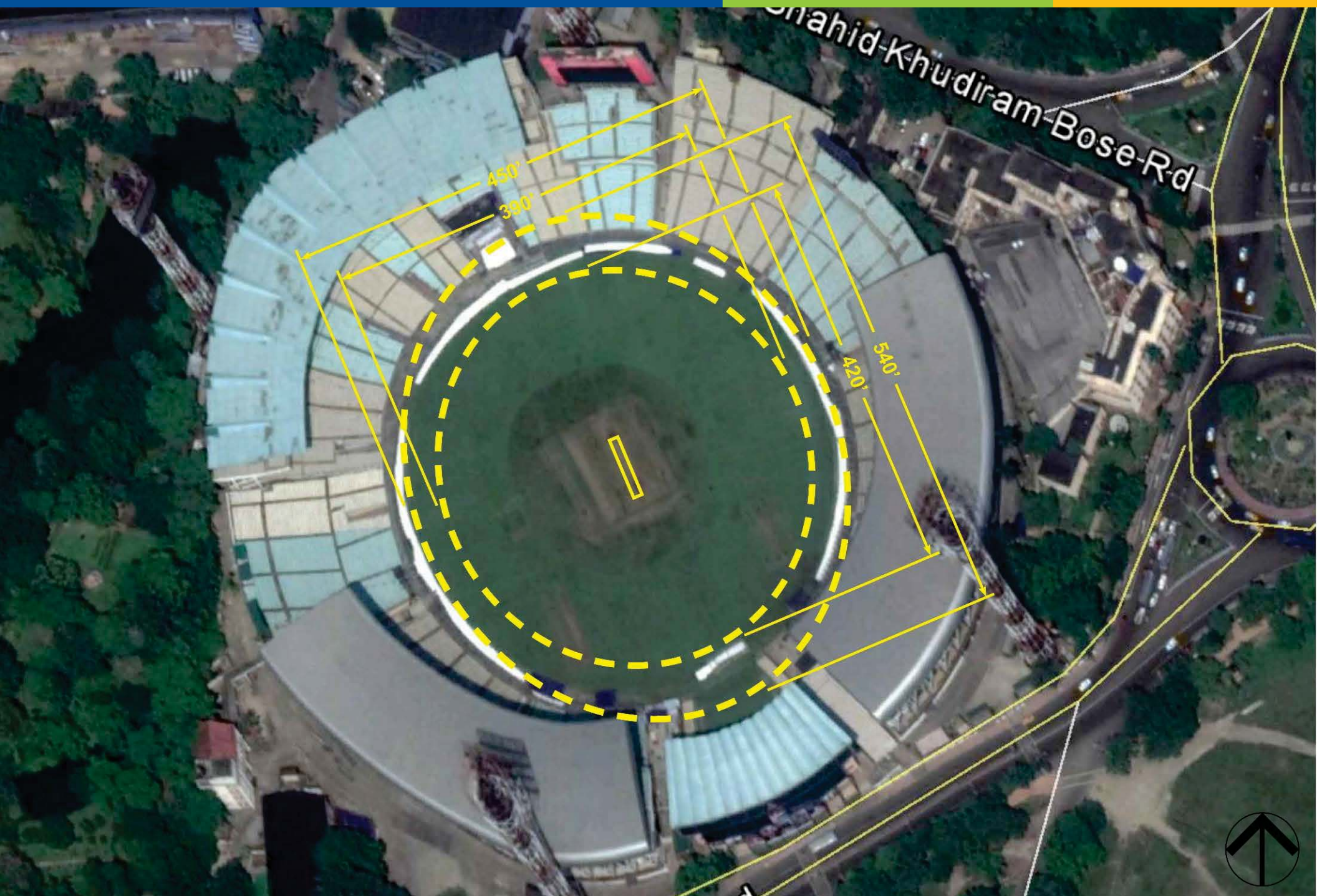
The Oval

Kennington, London, United Kingdom



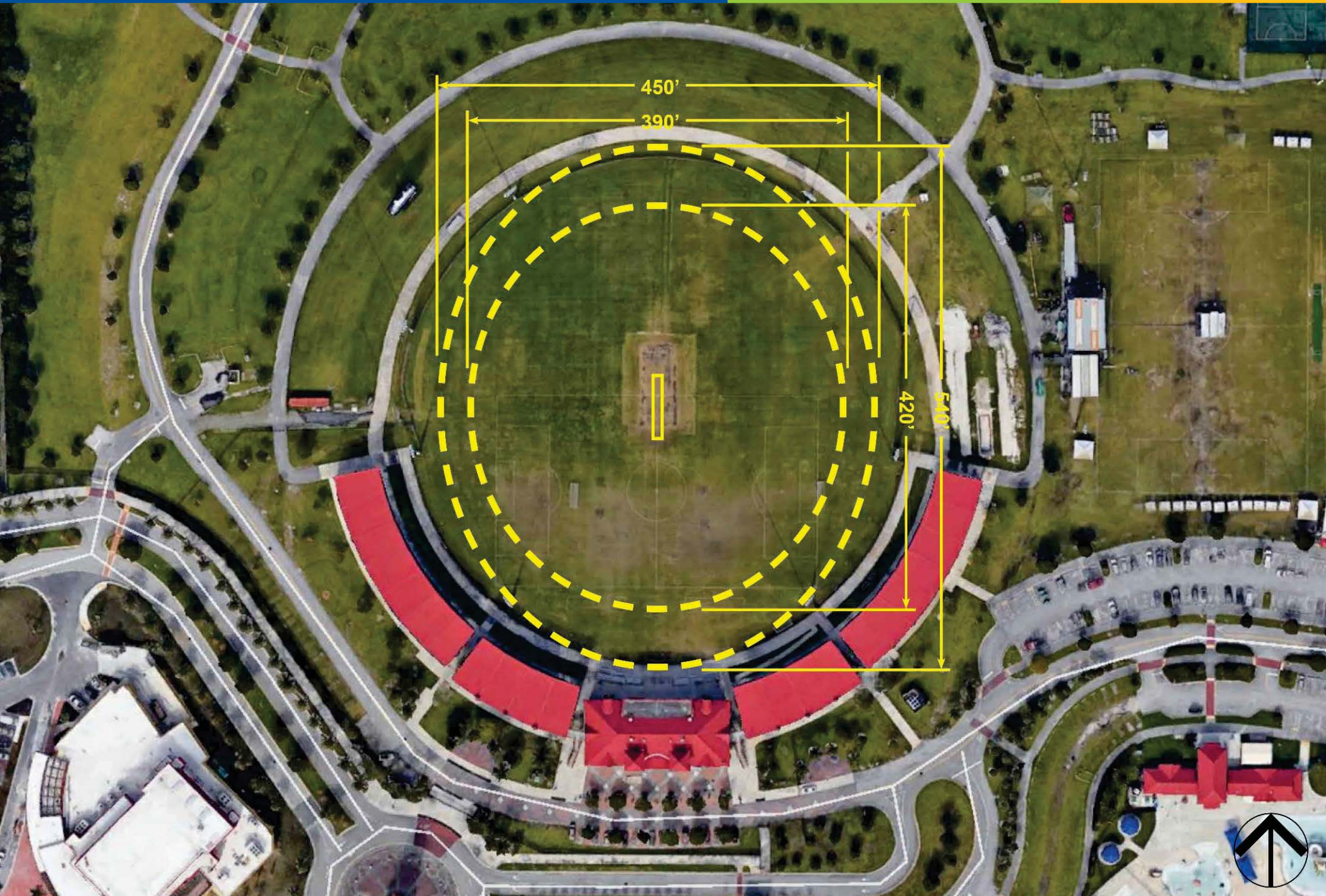
Eden Gardens

Kolkata, West Bengal, India



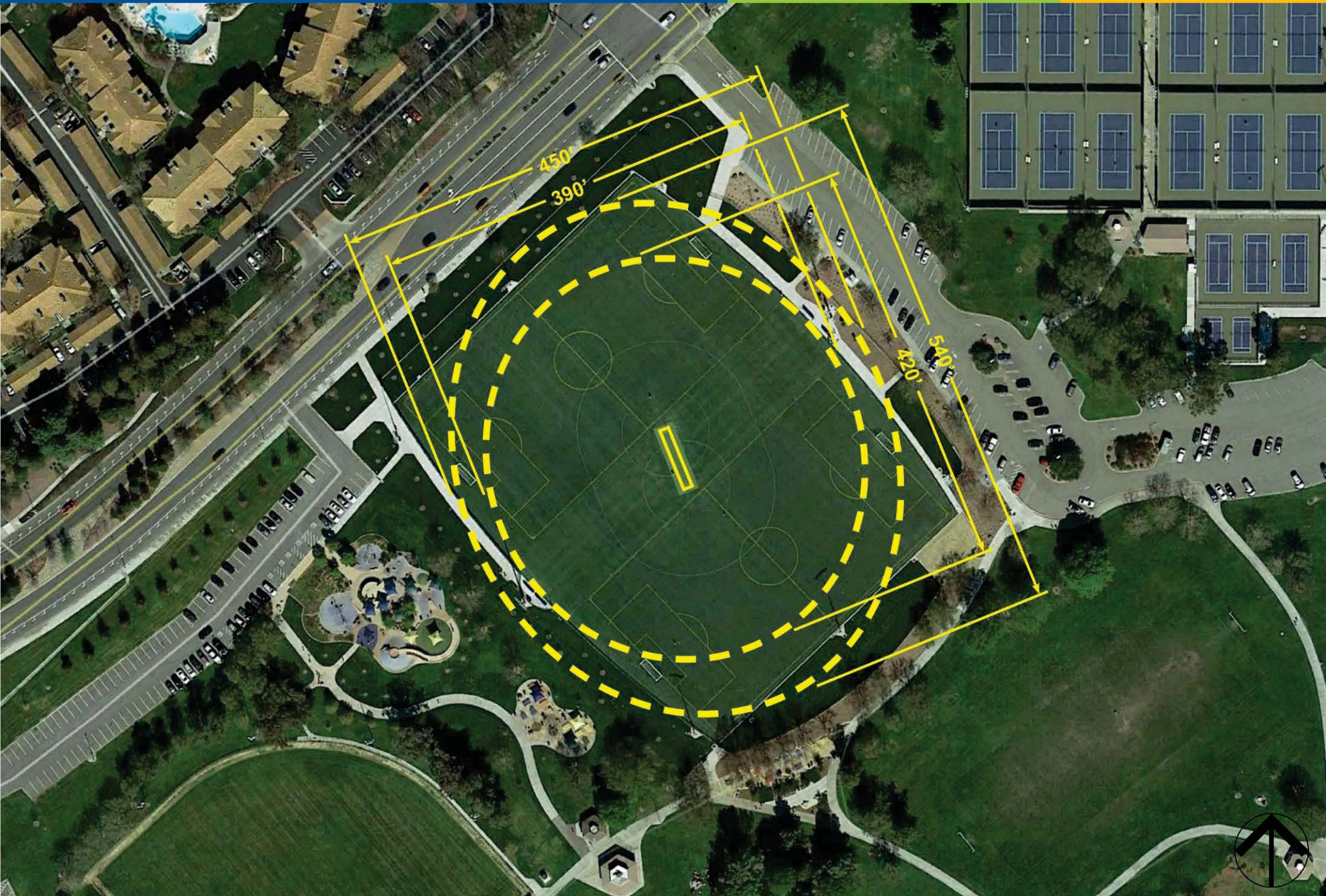
Central Broward Regional Park

Lauderhill, Florida



Fremont Cricket/Soccer Fields

Fremont, CA



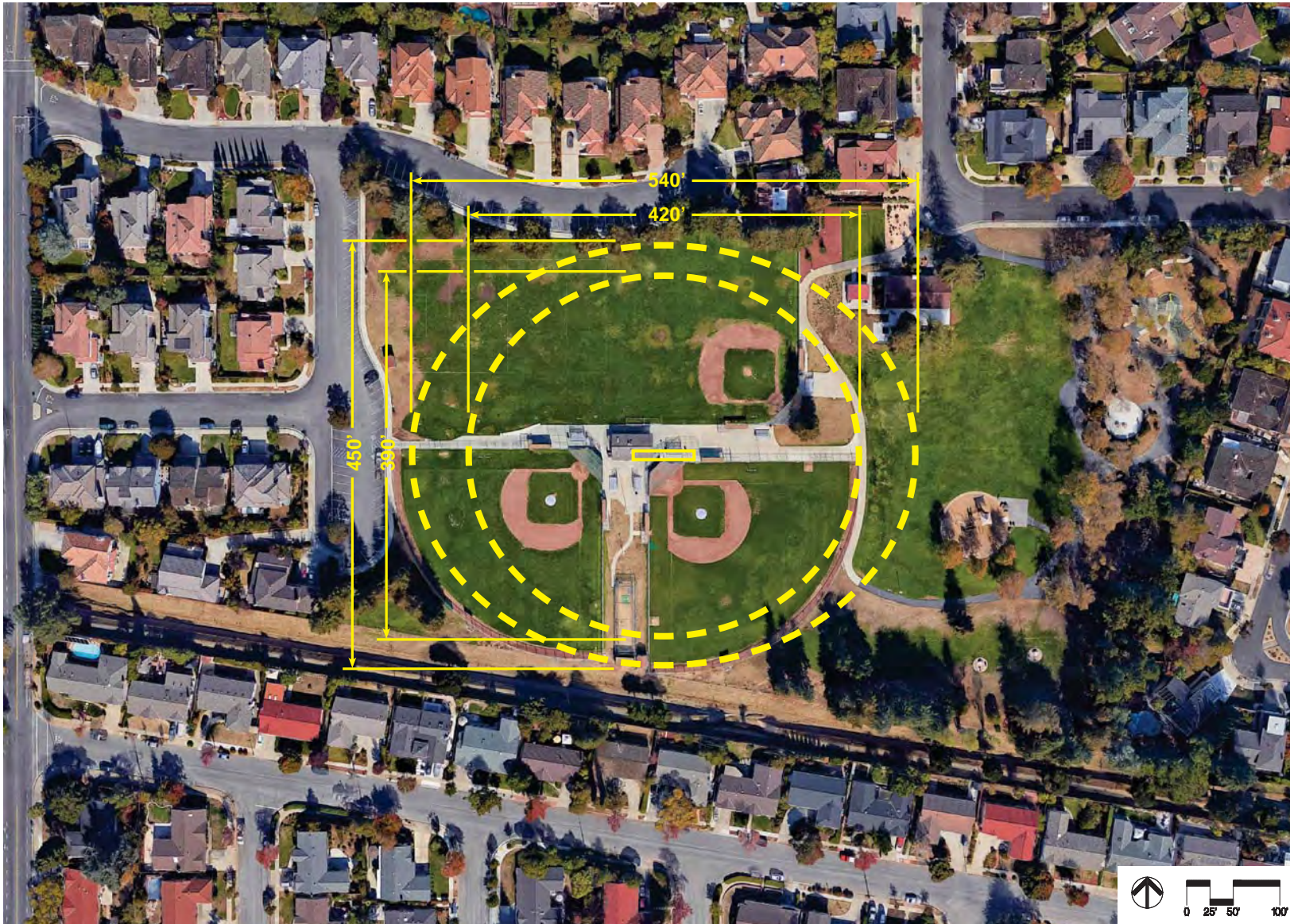
CREEKSIDE PARK



JOLLYMAN PARK



WILSON PARK



CREEKSIDE PARK

DISPLACED USES

- PARKING AND CIRCULATION
- PLAYGROUND
- BASKETBALL COURT
- SOCCER FIELD

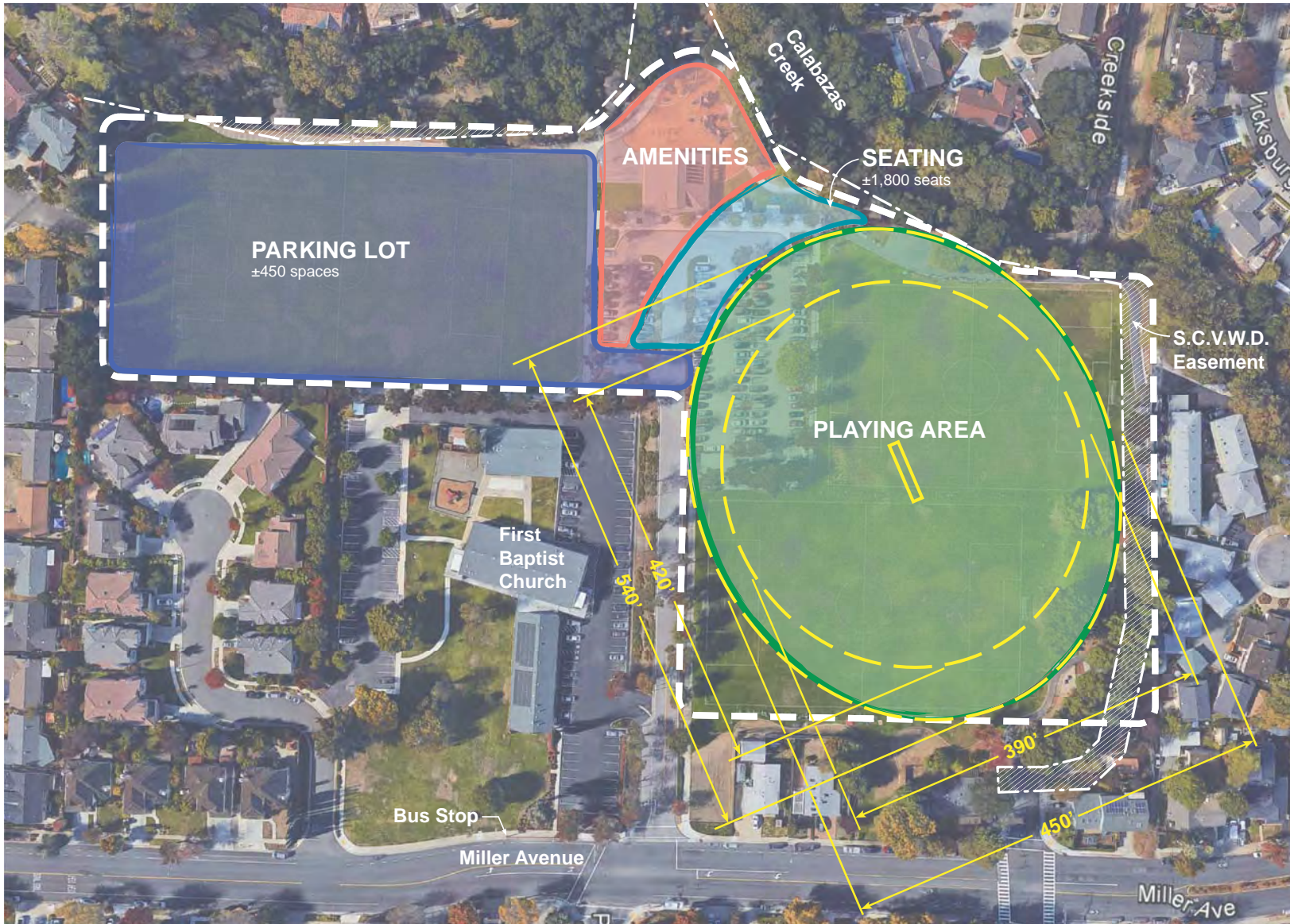
PROS

- FULL SIZE FIELD POSSIBLE
- EDGE BARRIER

CONS

- RESIDENTIAL NEIGHBORHOOD
- NARROW ACCESS DRIVE
- LOSS OF PARK AMENITIES
- LESS THAN IDEAL FIELD ORIENTATION

December 20, 2017



- CRICKET FIELD
- SPECTATOR SEATING
- AMENITIES
- PARKING



JOLLYMAN PARK

DISPLACED USES

- PLAY AREAS
- PARKING & CIRCULATION
- BASKETBALL

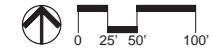
PROS

- FULL SIZE FIELD POSSIBLE

CONS

- RESIDENTIAL NEIGHBORHOOD
- LOSS OF PARK AMENITIES
- LESS THAN IDEAL FIELD ORIENTATION
- LOSS OF MATURE TREES

- CRICKET FIELD
- SPECTATOR SEATING
- AMENITIES
- PARKING



WILSON PARK

DISPLACED USES

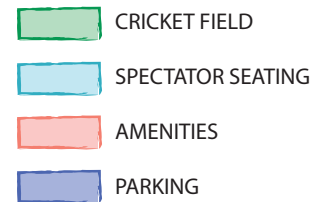
- BASEBALL FIELDS
- RESTROOM/CONCESSION
- PARK CIRCULATION
- PLAY AREAS

PROS

- FULL SIZE FIELD POSSIBLE

CONS

- LESS THAN IDEAL FIELD ORIENTATION
- TRAFFIC VOLUME IN NEIGHBORHOOD
- RESIDENTIAL NEIGHBORHOOD
- LOSS OF PARK AMENITIES



Cricket Feasibility Study - Sites Comparison Matrix

	Creekside Park	Wilson Park	Jollyman Park
Criteria			
Full Size Field?	Yes	Yes	Yes
Spectator Capacity	<2,000	<2,000	<2,000
Parking Capacity	<500	<500	<500
Existing Parking Spaces	106	182	76
Distance from Freeway	1 mi from HWY 280	1 mi from HWY 280	1.2 mi from HWY 85
Distance to Bus Route	0.1 mile	0.5 mile	0.5 mile
Field Orientation	Northeast-Southwest	East-West	Northwest-Southeast
Service Road to Accommodate Traffic	Med	Low	Med
Existing Edge Barrier	Yes	No	No
Adjacent Land Uses	Single Res., Multi Res., Church, Creek	Single Res., Creek	Single Res., Church
Displaced Uses:			
Soccer Field	Yes - 3	Yes - 1	Yes - 1 to 2*
Baseball Field	Other **	Yes - 3	No
Basketball Court	Yes - 1	No	Yes - 1
Playground	Yes - 1	Yes - 2	Yes - 2
Pathways	Yes	Yes	Yes
Buildings	No	Yes - 1	No

* Displaces the west soccer field and encroaches on the east soccer field

** Displaces a baseball backstop / practice area

CRICKET FEASIBILITY STUDY

CITY OF CUPERTINO

